



GTF2H1 mouse mAb

Catalog No	YP-Ab-01078
Isotype	IgG
Reactivity	Human
Applications	WB;IP;ICC
Gene Name	gtf2h1
Protein Name	
Immunogen	Purified recombinant human GTF2H1 protein fragments expressed in E.coli.
Specificity	This antibody detects endogenous levels of GTF2H1 and does not cross-react with related proteins.
Formulation	Liquid in PBS containing 50% glycerol, 0.5% BSA and 0.02% sodium azide.
Source	Monoclonal, Mouse
Purification	The antibody was affinity-purified from mouse ascites by affinity-chromatography using epitope-specific immunogen.
Dilution	wb 1:300 icc 1:50
Concentration	1 mg/ml
Purity	≥90%
Storage Stability	-20°C/1 year
Synonyms	Basic transcription factor 2 62 kDa subunit;Basic transcription factor 62 kDa subunit; BTF 2;BTF2;BTF2 p62;General transcription factor IIH polypeptide 1;General transcription factor IIH subunit 1;General transcription factor IIH, polypeptide 1, 62kDa;gtf2h1; TF2H1;TF2H1_HUMAN;TFB1;TFIIH;TFIIH basal transcription factor complex p62 subunit.
Observed Band	62kD
Cell Pathway	Nucleus.
Tissue Specificity	Liver,Lung,
Function	function:Component of the core-TFIIH basal transcription factor involved in nucleotide excision repair (NER) of DNA and, when complexed to CAK, in RNA transcription by RNA polymerase II.,PTM:Phosphorylated.,similarity:Contains 2 BSD domains.,subunit:One of the six subunits forming the core-TFIIH basal transcription factor. Interacts with PUF60.,
Background	function:Component of the core-TFIIH basal transcription factor involved in nucleotide excision repair (NER) of DNA and, when complexed to CAK, in RNA transcription by RNA polymerase II.,PTM:Phosphorylated.,similarity:Contains 2 BSD domains.,subunit:One of the six subunits forming the core-TFIIH basal transcription factor. Interacts with PUF60.,



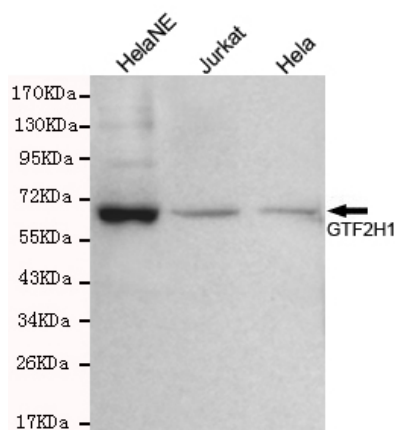
matters needing attention

Avoid repeated freezing and thawing!

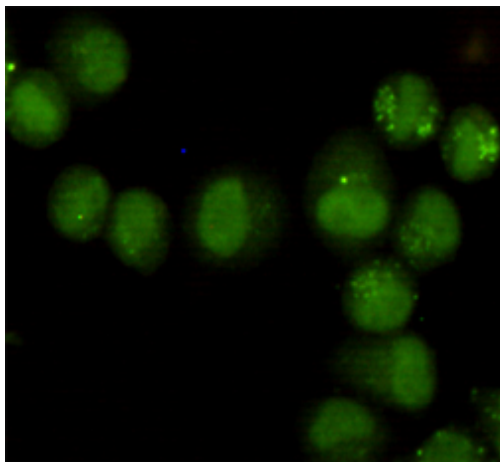
Usage suggestions

This product can be used in immunological reaction related experiments. For more information, please consult technical personnel.

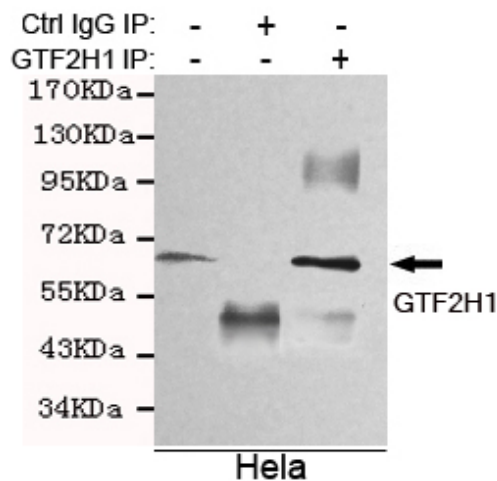
Products Images



Western blot detection of GTF2H1 in HeLa, HeLa NE and Jurkat cell lysates using GTF2H1 mouse mAb (1:300 diluted). Predicted band size: 62KDa. Observed band size: 62KDa.



Immunocytochemistry staining of HeLa cells fixed with 4% Paraformaldehyde and using GTF2H1 mouse mAb (dilution 1:50).



Immunoprecipitation analysis of HeLa cell lysates using GTF2H1 mouse mAb.